

Radio Assist

Text Wire Processing

At the heart of the writing process, Script, Radio-Assist 8's dispatch processing module, keeps journalists close to information sources. With display of dispatches as they arrive, editing and links with sound recordings, all features are combined to produce news with a firm grip on reality.

Capture and processing

The acquisition of wires from various sources (satellite, modem, email or any other method) is based on protocols defined by the various providers. Script Office is compatible with market standard protocols ie AFP, Reuters, AP, Bloomberg, IRN, etc.

The wires of several press agencies can be received simultaneously in Arabic, Chinese, Russian or Latin characters.

Display

Basic dispatches are sorted on the basis of their characteristics (headlines, slugs, etc.). Users have a summary view displaying the first few lines of the dispatch. Users may decide to display only those wires from certain agencies selected beforehand, and may also set a special display for urgent dispatches (hot box).

Dispatch editing

Sound and text editing are tightly interwoven. All classic word processing tools are available: choice of typeface, size, style, paragraph format as well as copy/paste, cut and delete functions. Direct creation of a text from a dispatch leaves the dispatch unchanged and more than one user can view one dispatch at a time. Having completed editing, the journalist adds sound items to the report using drag and drop, and a full news item can be prepared in just a few minutes. Stories created in this way (text + audio) are added in their own right to the database. When the report is ready for broadcast the journalist uses Feder All Desk, a Radio-Assist 8 module which allows shared and secure access to on-air playlists, to place it directly in the on-air playlist.

Import & Export of texts

The Import/Export tool is used to import and export text files. Standard formats are recognised (ASCII, Word, txt, etc.). Direct email forwarding is included.

Filtering

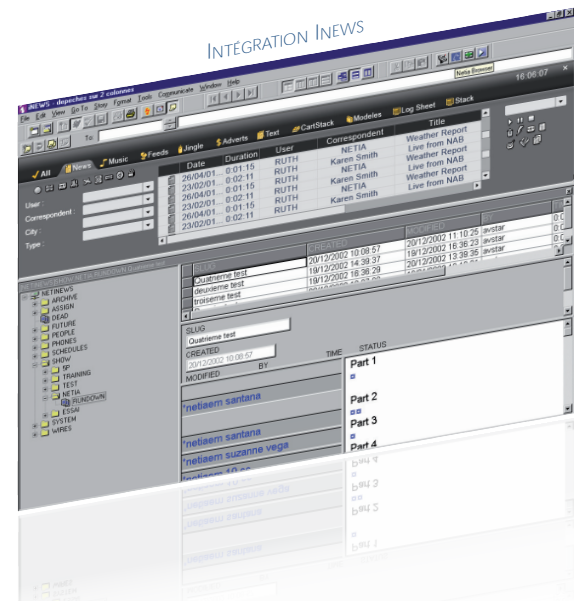
The Script Office editing system uses filters to provide the user with a quick break-down of wires. Filters are applied to all wires, are modified according to the needs of the user and are multilingual. Filter criteria defined by the user are immediately available by selection. Filter results are automatically classed in order of arrival.



Anxious to integrate with existing customer environments, NETIA has developed News Link. Using the MOS (Media Object Server) protocol, Radio-Assist 8 interfaces with many dispatch processing systems such as iNews, ENPS, etc. From a single interface, the functionalities of both systems are available simultaneously, running together smoothly.

iNews Integration

- ▶ All iNews functionalities remain available
- ▶ Possibility of accessing the Radio-Assist database
- ▶ Sound item editing by calling the editing plugin
- ▶ Text and sound items can be added to stories.



ENPS Integration

- ▶ Journalists keep their working environment
- ▶ Search and play for sound items needed for the news from the Radio-Assist database
- ▶ Sound item editing using the editing plugin
- ▶ Text and sound items can be added to stories in a mix or cartridge
- ▶ Management of the failover body.

