

Netia WORKFLOW ENGINE | Manreo 2

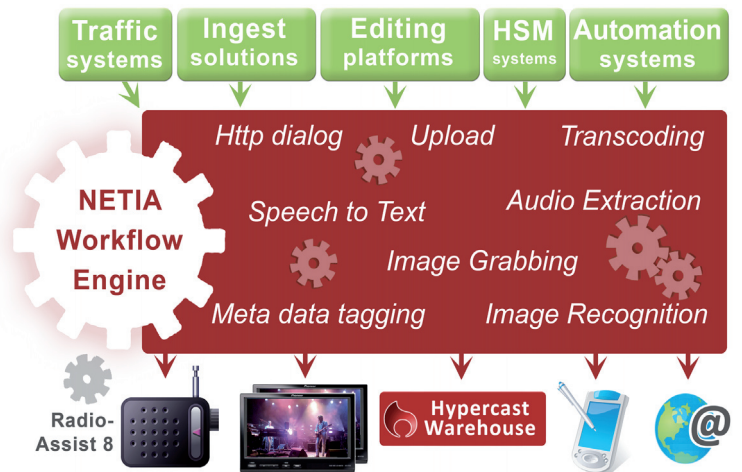
NETIA WorkFlow Engine is a sophisticated automation system which choreographs, visually represents and then executes processes or workflow. It enables system administrators to create and organize the media management processes by facilitating and harmonizing exchanges between all existing applications found in a broadcast environment.



■ NETIA WorkFlow Engine - key features

....> NETIA Workflow Engine

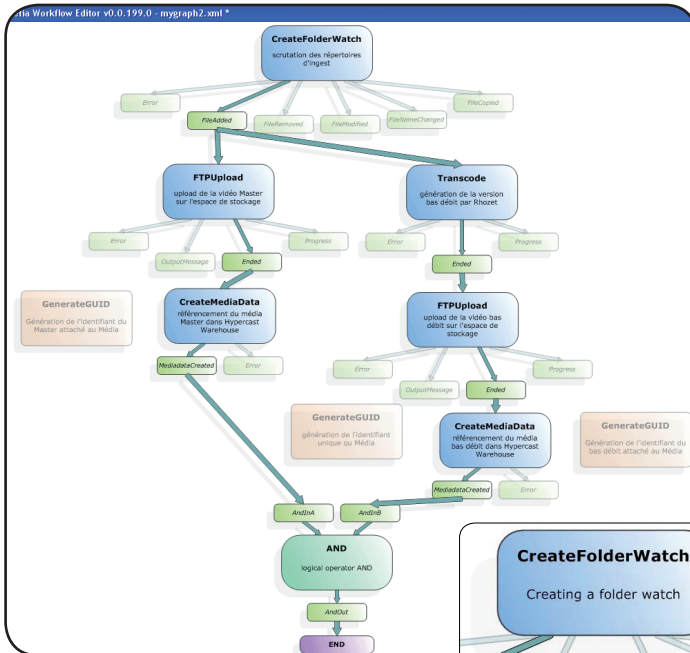
- Determines the order for dealing with workflow and load balancing.
- Integrates Media Asset Management functionality with existing production workflow.
- Automates content distribution processes.
- Provides security warning and notification system.



....> User benefits

- Immediate display of step by step workflow construction.
- Intuitive and ergonomic graphic user interface makes workflow process easy.
- Highly scalable modules library and open-ended functionality are enriched on an ongoing basis.
- Optimization of necessary time to move content, and make it available.
- Reducing costs and minimizing the need for human intervention.

■ **NETIA Workflow Editor - key features**



- Schematic representation of tasks to create workflow.
- Library of functionality and tasks (transcoding, FTP, audio extraction, speech to text, quality control).
- Library of modules to enable interoperability between HyperCast Warehouse and all third party applications (for example: editing platforms, automation systems, archives...).

WORKFLOW IS VISUALIZED AS A SCHEMATIC DIAGRAM

